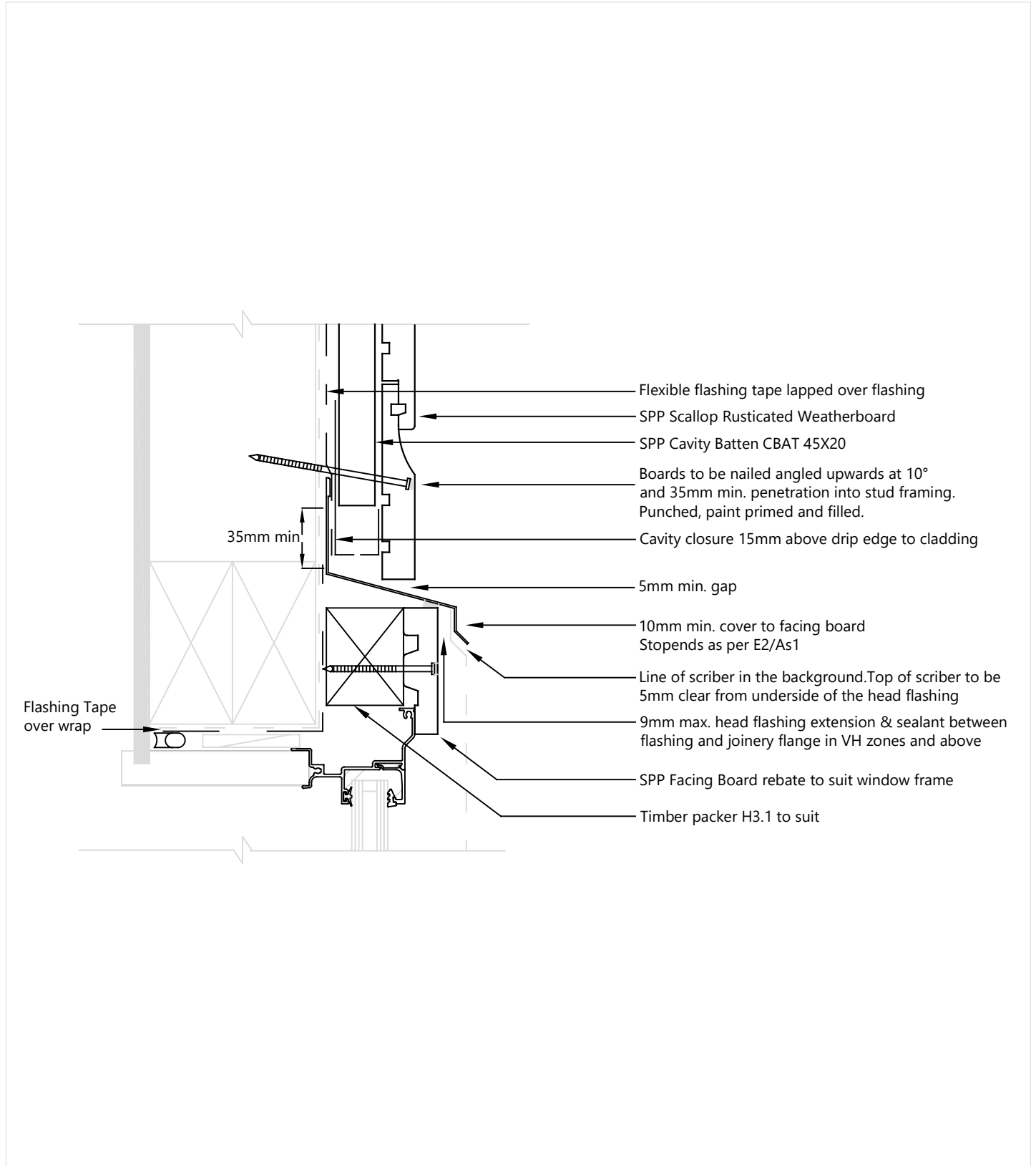
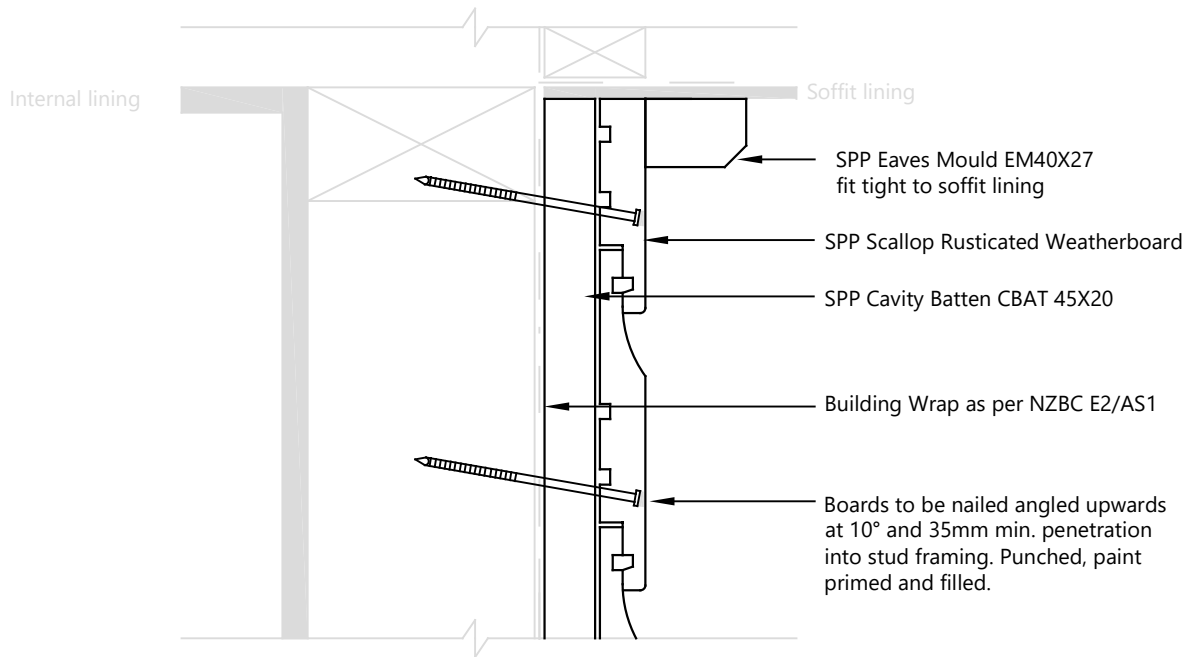


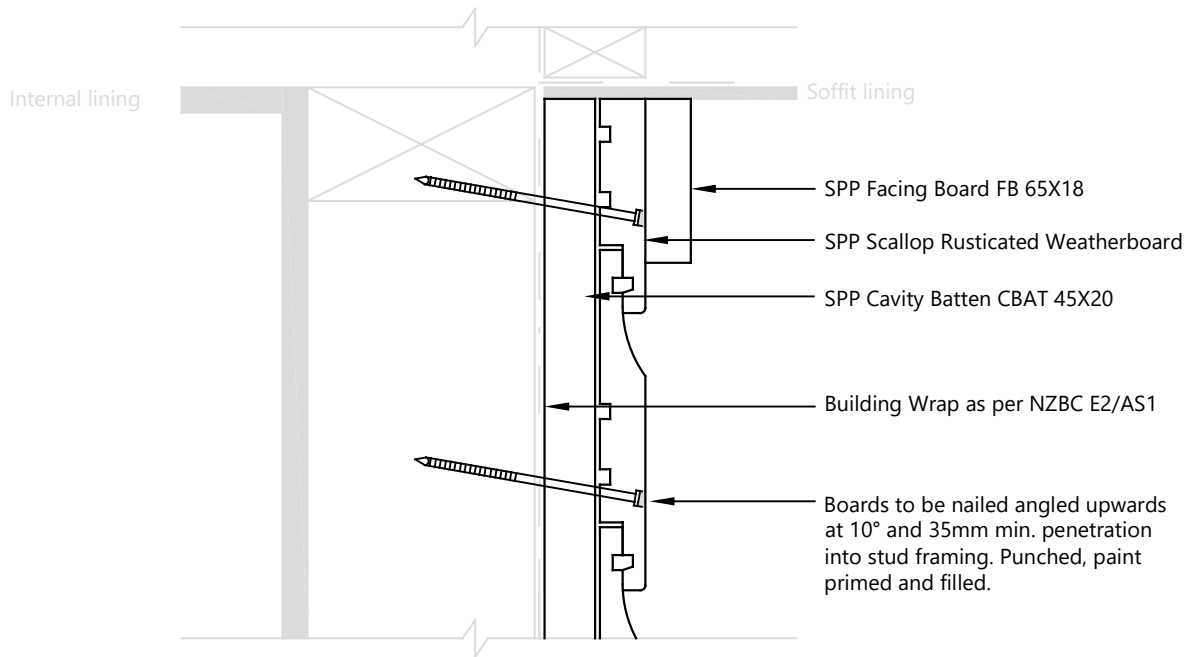
Scallop Rusticated Weatherboard - Cavity Fix - Aluminium Joinery Head - Facing Board

Scale 1:3 @ A4



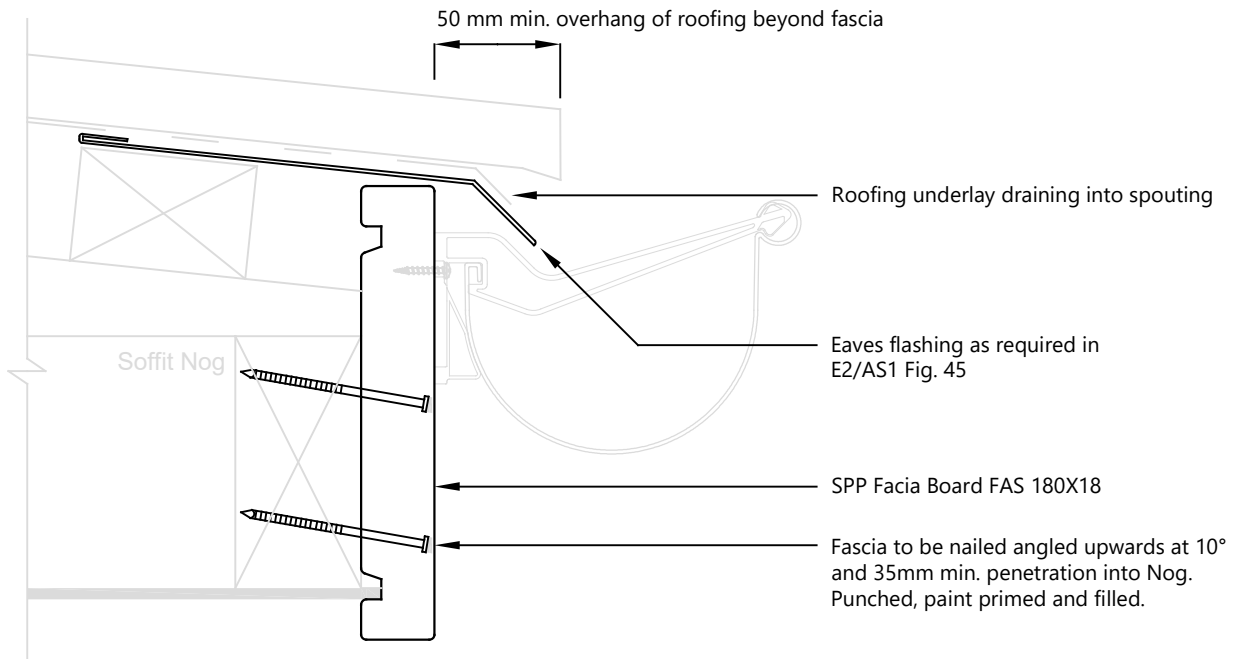






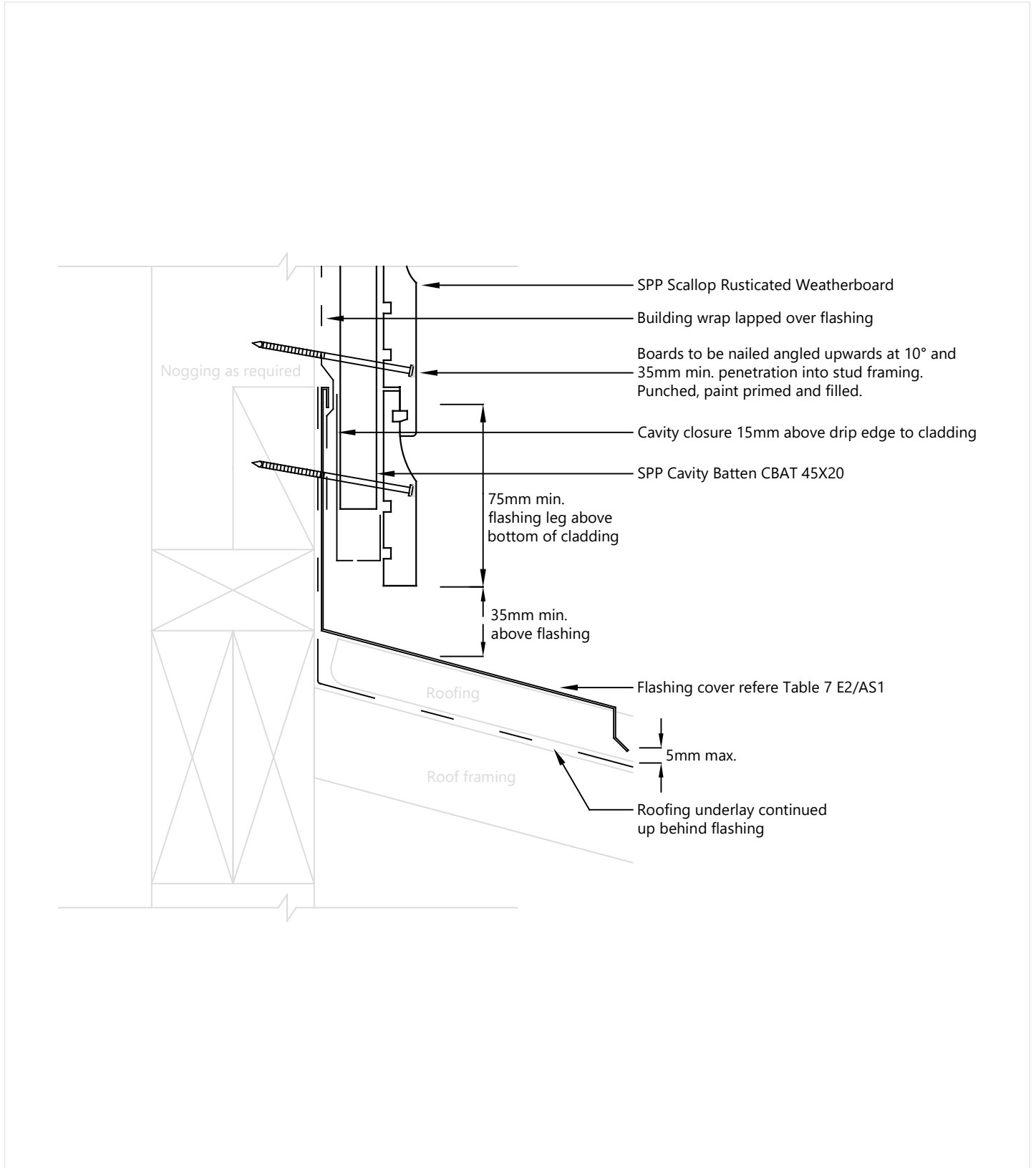
Scallop Rusticated Weatherboard - Cavity Fix - Fascia Eaves

Scale 1:3 @ A4



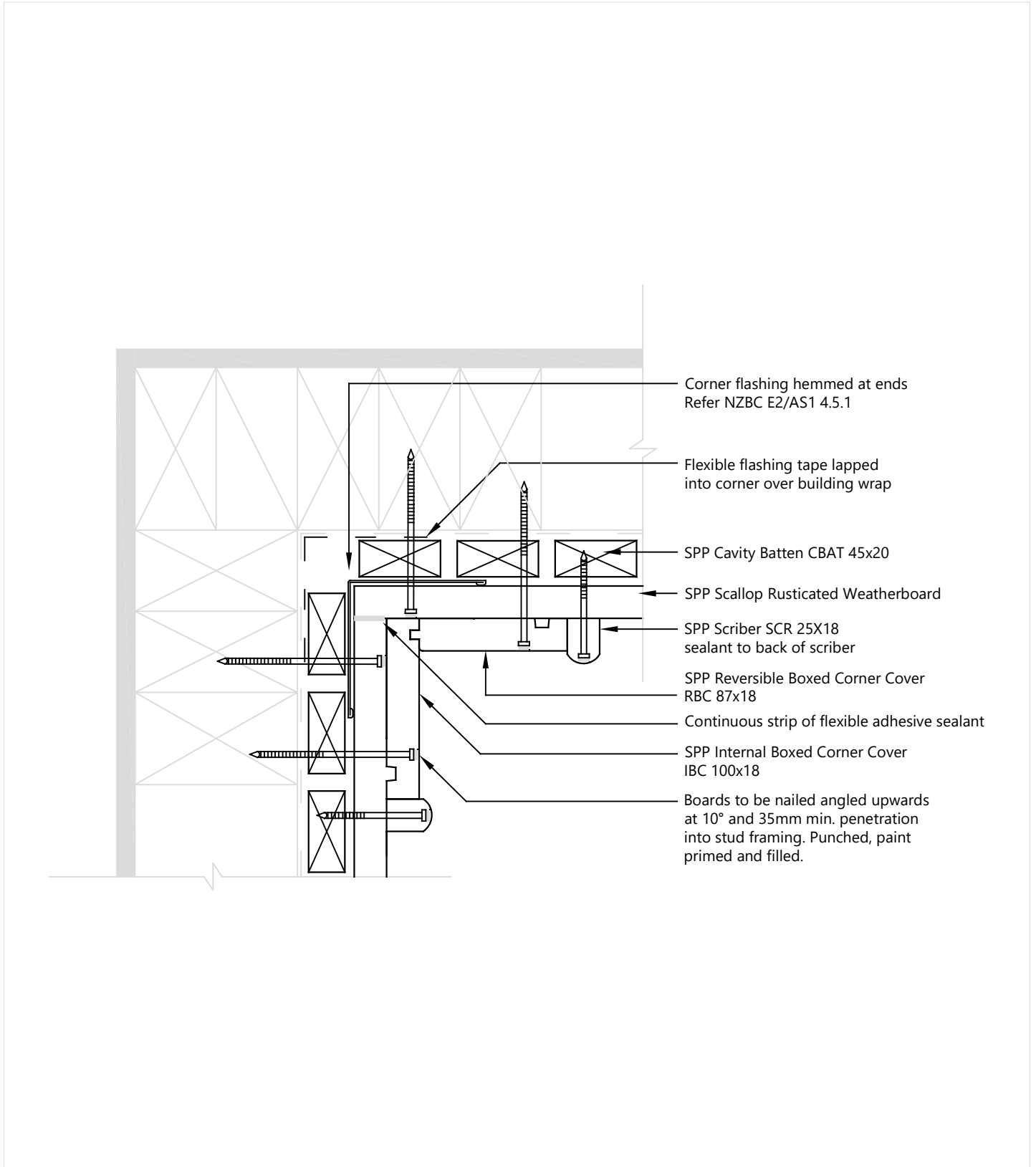
Scallop Rusticated Weatherboard - Cavity Fix - Roof to Wall Junction

Scale 1:3 @ A4



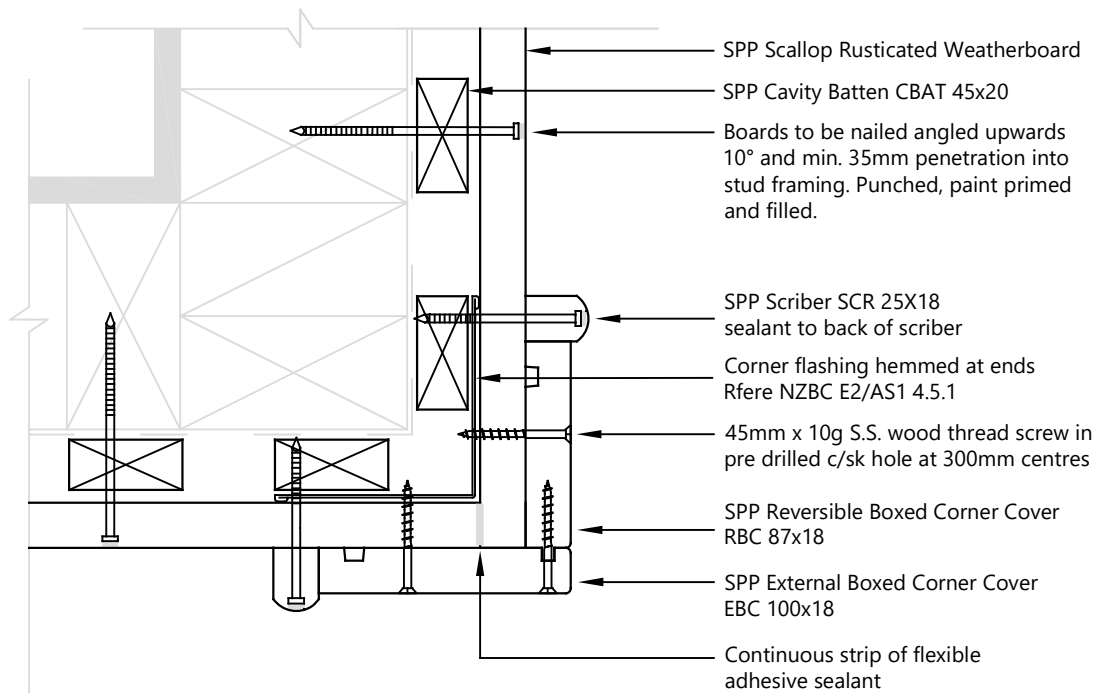
Scallop Rusticated Weatherboard - Cavity Fix - Internal Corner

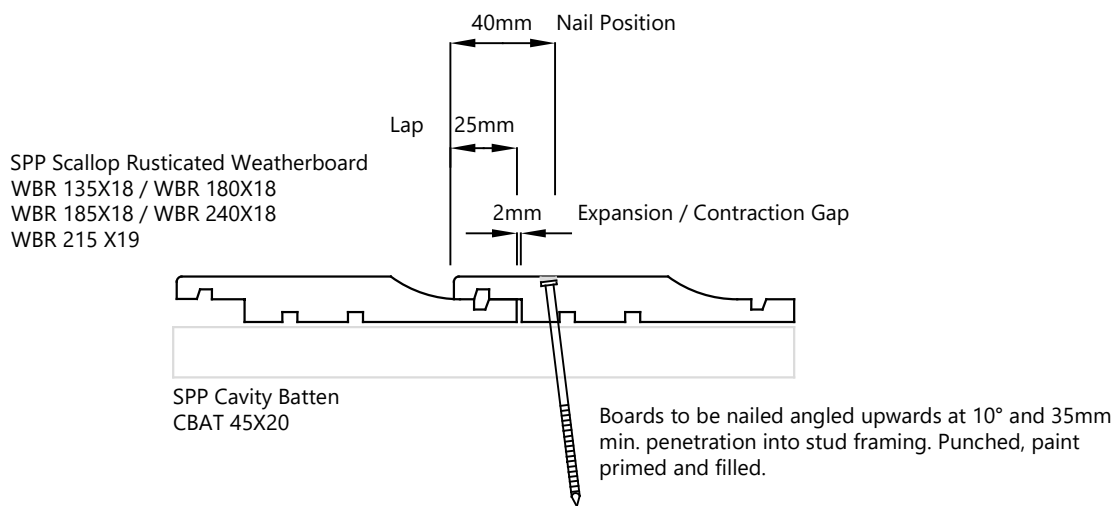
Scale 1:3 @ A4



Scallop Rusticated Weatherboard - Cavity Fix - External Corner

Scale 1:3 @ A4





Weatherboard and fascia should be installed as per the current building code. Please refer to BRANZ bulletin number 468, Fixing of Timber Weatherboards. See E2/AS1 for a complete list of fixing options.

Avoid joining weatherboards whenever possible, but if unavoidable use a 45 degree scarf joint directly over studs or cavity batten. Angle mitre joints away from the prevailing weather and or use flat soaker. Alternatively a butt joint is acceptable using flat soakers.